

Certificate of Analysis

**Custom Services for**

Human induced Pluripotent Stem Cell (iPSC) Line: **OR00023\*B**

<b>Diagnosis</b>	Passage-Matched Control, Developmental and Epileptic Encephalopathy 2
<b>Parental cell line mutation</b>	CDKL5; c.1412delA (p.Asp471fs)
<b>Parental cell type, cell line ID</b>	iPSC, OR00007
<b>Sex</b>	Female
<b>Reprogramming method</b>	Sendai viral vectors containing OCT4, SOX2, KLF4, and CMYC
<b>Passage number at freeze</b>	P16
<b>Culture media</b>	mTeSR1™
<b>Feeder or Matrix substrate</b>	Matrigel®
<b>Recommended passage method and split ratio</b>	Versene; 1:8 Every 5-7 days
<b>iPSC line establishment publication(s)</b>	

The following testing specifications have been met for this product lot:

Test Description	Test Method	Test Specification	Result
<b>Post-Thaw Cell Viability</b>	Colony doubling	Colony formation and diameter doubling within 5 days	Pass
<b>Sterility</b>	Growth on agar and broth	Negative	Pass
<b>Mycoplasma</b>	qRT-PCR	Negative	Pass
<b>Alkaline Phosphatase Staining</b>	Cell staining	> 80% cells with positive staining	Pass
<b>Identity Match</b>	STR (THO-1, D22S417, D10S526, vWA31, D5S592, and FES/FPS)	Match parental cell line	Pass
<b>Genomic Integration of Episomal Plasmid</b>	Genomic PCR using plasmid specific primers and endogenous FBXO1 control	No plasmid specific sequence amplified using 100ng gDNA template	N/A
<b>Detection of Sendai Virus Genome and Transgene</b>	qRT-PCR using SEV specific primers	No detection of SEV genome or transgenes	N/A
<b>Surface Antigen Expression of Stem Cell Markers</b>	Immunostaining and flow cytometric detection	> 80% expression of SSEA4	Pass
<b>Differentiation Potential</b>	Embryoid Body (EB) formation and gene expression	Minimal of 1 gene per germ layer expressed 2 fold or higher	Pass
<b>Cytogenomics</b>	G-banding, Affymetrix Human SNP Array 6.0	46,XX[20].arr(1-22,X)x2	Pass

Note: \*

Kenneth S, George      07/21/2023  
 .....  
 Technician, Stem Cell Laboratory      Date

Christine Grandizio      07/25/2023  
 .....  
 Manager, Stem Cell Laboratory      Date

Disclaimer: iPSC lines distributed by Coriell Institute for Medical Research may differ from those in the submitter's laboratory.

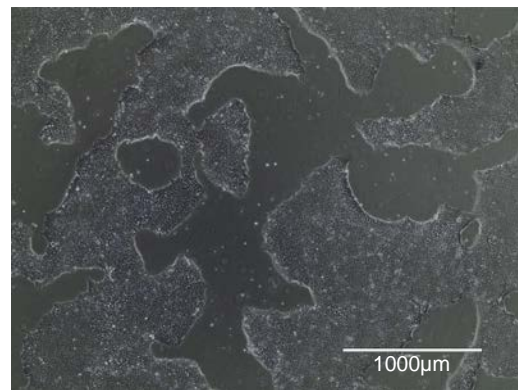
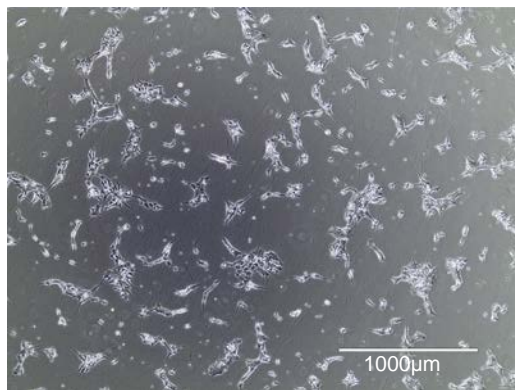
Form 1701-10 Rev E-122321: Custom Services Certificate of Analysis OR00023\*B

## Post-Thaw Cell Viability

One distribution lot vial of the cell line was thawed and placed in culture. Cultures were observed daily. Colonies were photographed upon first appearance, then 3 days later. Colonies must double in diameter within 5 days. The area for 5 colonies was measured using image analysis software. . The average area is reported here.

Day	Average area ( $\mu\text{m}^2$ )
1	25,252
4	136,923

Colony area increased by 5 fold.

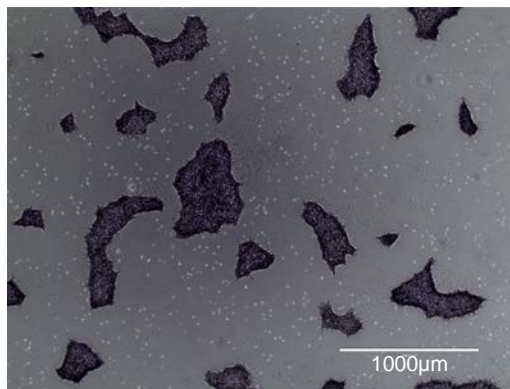


**Figure 1A.** Colonies post thaw (Day 1)

**Figure 1B.** Colonies 3 days after first observation (Day 4)

## Alkaline Phosphatase Staining

Cells were stained using the StemTAG™ Alkaline Phosphatase Staining Kit from CellBiolabs, Inc.

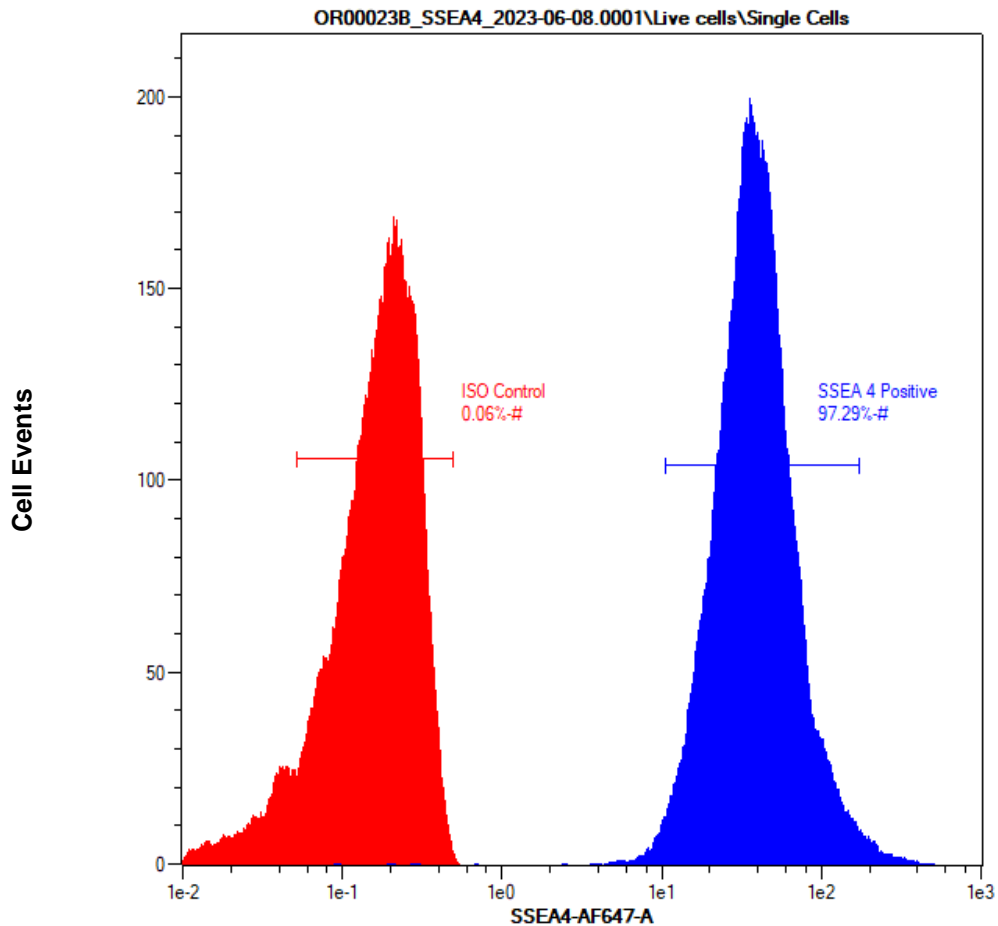


**Figure 2.** iPSC colonies showing alkaline phosphatase activity



## Surface Antigen Expression of Stem Cell Markers

Undifferentiated cells are stained for stage specific embryonic antigen 4 (SSEA4) which is expressed on the surface of undifferentiated human pluripotent stem cells. Cells were analyzed using the MACSQuant Flow Cytometer by Miltenyi Biotec. More than 80% of cells should stain with antibodies specific for SSEA4.

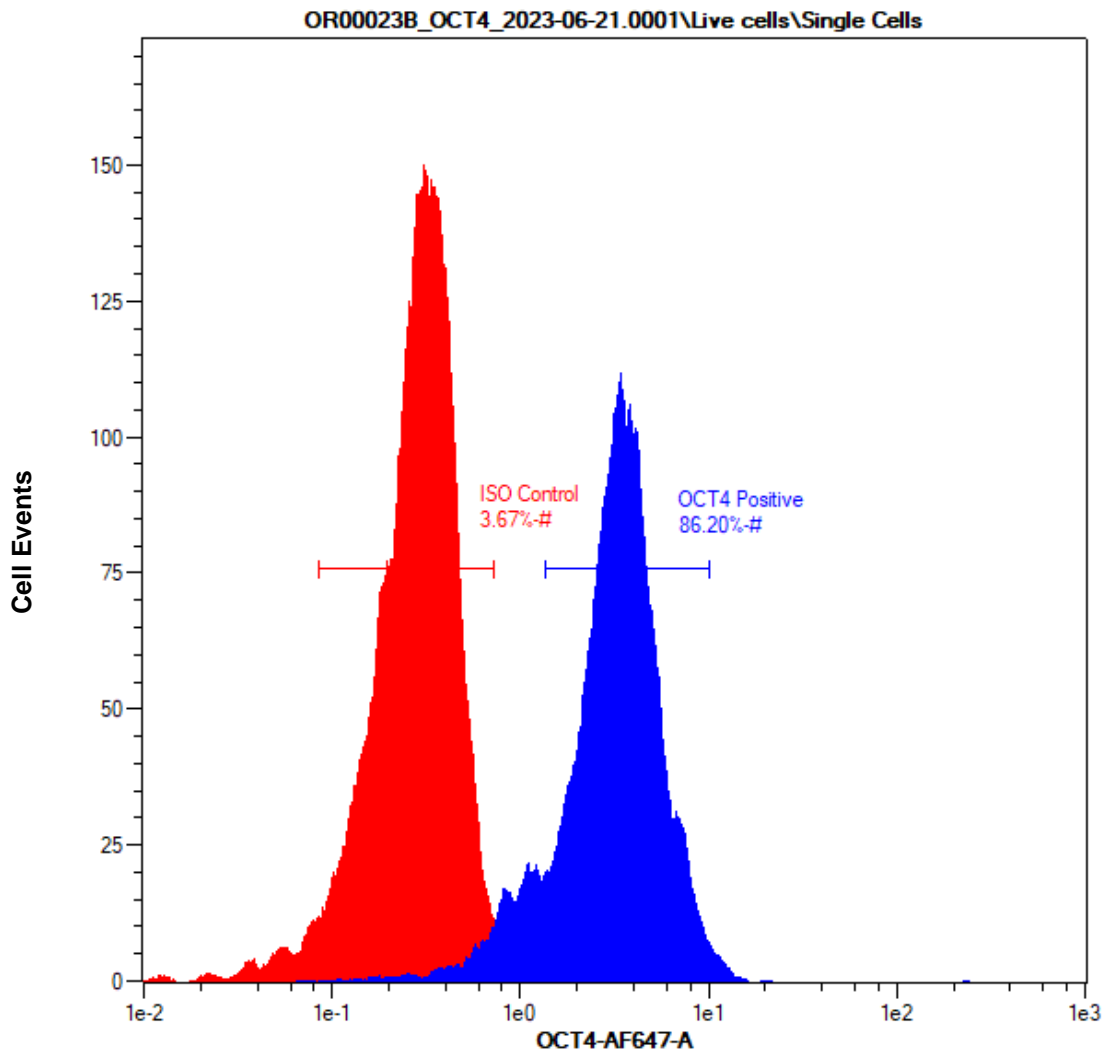


**Figure 3.** Representative histogram of SSEA4 positive population. Histogram is an overlay of isotype stained control (red) and SSEA4 positive population (blue).



## Surface Antigen Expression of Stem Cell Markers

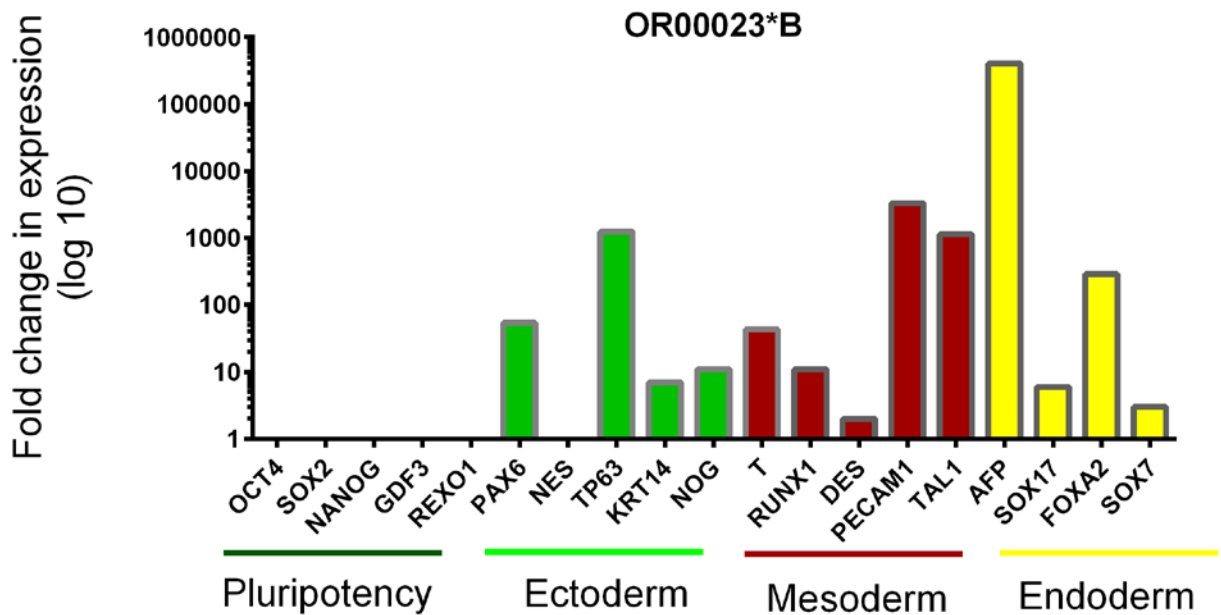
Undifferentiated cells are stained for octamer-binding transcription factor 4 (OCT4) which is involved in self-renewal of undifferentiated human pluripotent stem cells to maintain pluripotency. Cells were analyzed using the MACSQuant Flow Cytometer by Miltenyi Biotec. More than 80% of cells should stain with antibodies specific for OCT4



**Figure 4.** Representative histogram of OCT4 positive population. Histogram is an overlay of isotype stained control (red) and OCT4 positive population (blue).

## Differentiation Potential

Cells are differentiated by embryoid body (EB) formation to assess pluripotency. RNA is extracted and gene expression is measured by quantitative RT-PCR. Ct values are adjusted to the endogenous housekeeping gene GAPDH. Relative gene expression is shown as the fold difference in expression compared to undifferentiated cells. Expression of at least one gene per germ layer should increase by 2 fold or higher.



Gene	Fold change	Gene	Fold change	Gene	Fold change	Gene	Fold change
OCT4	0	PAX6	54	T	43	AFP	407849
SOX2	0	NES	1	RUNX1	11	SOX17	6
NANOG	0	TP63	1253	DES	2	FOXA2	288
GDF3	0	KRT14	7	PECAM1	3334	SOX7	3
REXO1	0	NOG	11	TAL1	1140		

**Figure 5.** Fold change in expression of pluripotency genes and tri-lineage specific genes

Note: Negative values are set as 0. Calculations are performed using the  $2^{-\Delta\Delta CT}$  method. (Livak KJ, Schmittgen TD. *Methods*. 2001 Dec;25(4):402-8.PMID:11846609)



## Cytogenomics

Microarray	Affymetrix Human SNP Array 6.0
Cytogenetic Banding Technique	G-banding
Passage at Analysis	17
Metaphase Cells Counted	20
Metaphase Cells Analyzed	5
Metaphase Cells Karyotyped	5
Short ISCN	46,XX[20].arr(1-22,X)x2



**Figure 6.** G-banding karyogram



## Sequence Verification

The presence of the CDKL5 c.1412delA (p.Asp471fs) mutation in patient-derived iPSC line OR00023 was confirmed by Sanger Sequencing.

OR00023: DEVELOPMENTAL AND EPILEPTIC ENCEPHALOPATHY 2 (CDKL5)

c.1412delA (p.Asp471fs)

